



Fossil Match Ups

Links to Dinosaur Dreaming:

The fossilized bones and teeth from several different dinosaurs have been found at the Dinosaur Dreaming dig site. Dinosaurs were all different shapes and sizes, so it is important to compare their fossilized remains with those of other dinosaurs from elsewhere in the world. This is the way palaeontologists are able to identify the dinosaurs from Inverloch.

Links to the curriculum:

In this activity students are encouraged to match the illustrations of animals found at the Dinosaur Dreaming site with the written information about each animal. This activity links to the Thinking, English, Science and Arts domains of VELs.

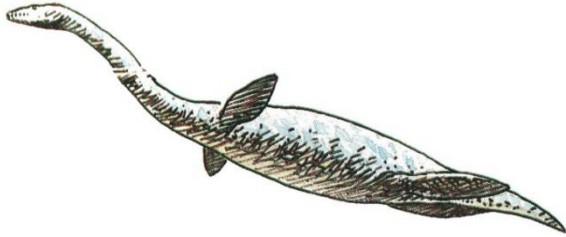
Procedure:

The following table contains pictures and descriptions of various extinct animals.

1. Print out the illustrations and descriptions of the animals on card (or paper to laminate), then cut out the individual cards so that you end up with 16 separate cards. You may need to run off two sets if you have 32 students in your class
2. Each student is given a card which could either have an illustration or a description. Students are to find their matching pair. Students should pair up so each pair has an illustration and a matching description.
3. Each pair then tells the rest of the class about their animal using the diagram and the information.
4. Each pair could also act out how they think the animal might have moved around.

Alternative use for cards:

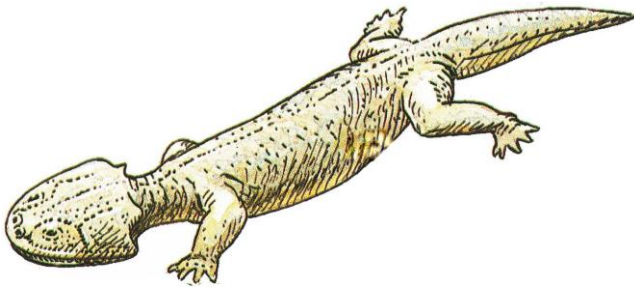
1. Use illustration cards as puzzle cards by cutting each illustration in half and providing each student with half a card.
2. Students would then find a partner who has the other half of their animal.
3. The pair of students would then describe their animal to the rest of the class.



Plesiosaur

Plesiosaur

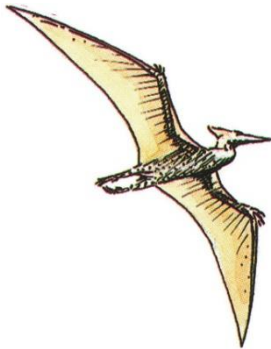
- long neck
- legs like paddles
- lived in the sea
- fed on fish



Giant amphibian

Giant amphibian

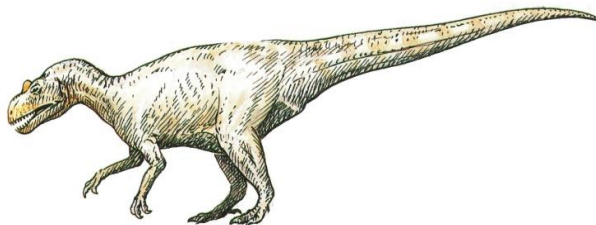
- lived in the rivers
- ate almost anything
- laid eggs in the water
- crawled on four legs



Pterosaur

Pterosaur

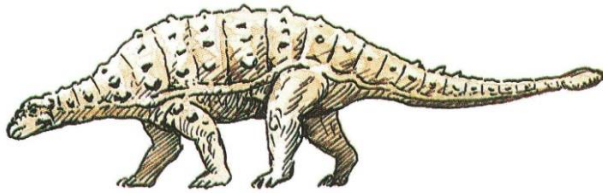
- flying reptile
- fed on fish
- wings like a bat
- some grew as large as a small airplane



Large carnivorous dinosaur

Large carnivorous dinosaur

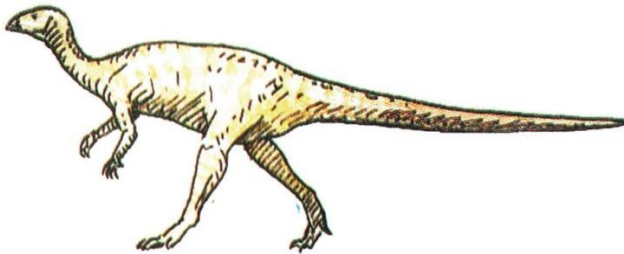
- more than 5m long
- fed on meat
- ran on hind legs
- top predator



Ankylosaur

Ankylosaur dinosaur

- armoured dinosaur
- walked on four legs
- slow mover
- ate plants



Ornithomimid

Ornithomimid dinosaur

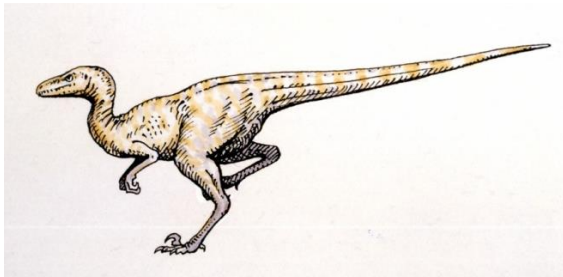
- ate plants
- ran on hind legs
- fast runner
- body shape similar to kangaroo



Ceratopsian dinosaur

Ceratopsian dinosaur

- ate plants
- walked on four legs
- small dinosaur
- skull had small bony frill



Theropod dinosaur

Theropod dinosaur

- small dinosaur
- ran on hind legs
- fast runner
- possibly hunted in packs